

ORCA PAD16

Website : www.worlde.com.cn
Tel : +86-571-88732265



- Three banks of 16 high quality velocity & pressure sensitive performance pads with RGB backlit, for 48 total, can be assigned easily as pads, Program change or Program bank switches.
- Three banks of 6 assignable rotary knobs, for 18 total, each can be edited by user.
- Function buttons, providing functions like Program Select, Note Repeat, Full Level and Note Repeat configuration.
- 16 Presets for configurable parameters.
- USB interface, adaptable to USB 2.0(FULL SPEED).
- Power supplied by USB.
- Compatible with Win XP/7/8/10/11/Vista and Mac OSX or greater.
- Compatible with iOS by using the Apple iPad Camera Connection Kit(sold separately).
- Drive free and hot-plug supported.
- Integration with DAWs (Ableton Live, Apple Logic Pro X, Propellerhead's Reason, etc.).



Orca PAD48

WWW.WORLDE.COM.CN

WORLDE®



FEATURES

- 48X High quality velocity & pressure sensitive performance pads with RGB backlit, can be assigned easily as pads, MIDI CC buttons or program change switches
- 8X Assignable knobs, can be edited by users
- 8X Assignable sliders, can be edited by users
- 16X Assignable buttons
- Function buttons, providing functions like, Note, Octave, After touch, Channel, Velocity, Mute and etc
- 1X MIDI out, 1 MIDI in
- Compatible with Win XP/7/8/10/11/Vista and Mac OSX or greater.
- Power supplied by USB and DC 9V
- Drive free and hot-plug supported

Orca PAD64 Pro

WWW.WORLDE.COM.CN



FEATURES

- 64X High quality velocity & pressure sensitive performance pads with RGB backlit, can be assigned easily as pads, MIDI CC buttons or program change switches
- 24X Assignable buttons
- Function buttons, providing functions like, Note, Octave, After touch, Channel, Velocity, Mute and etc
- 1X MIDI out, 1 MIDI in
- Compatible with Win XP/7/8/10/11/Vista and Mac OSX or greater
- Power supplied by USB and DC 9V
- Drive free and hot-plug supported



FEATURES

- 64 high quality velocity & pressure sensitive performance pads with RGB backlit, can be assigned easily as MIDI notes or MIDI CC buttons.
- Built-in with 128 GM sounds.
- Function buttons, providing functions like, OCTAVE, AFTERTOUCH, VELOCITY, MUTE and etc.
- USB interface, adaptable to USB 2.0(FULL SPEED). Power supplied by USB.
- MIDI OUT.
- 3.5MM Audio output.
- Compatible with Win11/10/8/7/XP/Vista and Mac OSX or greater.
- Drive free and hot-plug supported.

Orca mini25

Website : www.worlde.com.cn
Tel : +86-571-88732265



- 25 Velocity sensitive mini-keys, with 3 velocity curve and one constant velocity.
- 16 High quality velocity & pressure sensitive performance pads with RGB backlit , can be assigned easily as pads, MIDI note buttons.
- 8 Assignable rotary knobs, each can be edited by user.
- Brilliant OLED display for immediate parameter setting.
- 2 Touch sensors of dynamic pitch bend and modulation touch strips.
- Play and record transport control buttons.
- Standard sustain pedal jack,compatible with switch pedal.
- Connect to your hardware with a standard TRS MIDI Out 3.5mm jack .
- Powerful and creative Arpeggiator for generating ideas quickly.
- Fixed Chord mode.
- USB interface, adaptable to USB 2.0(FULL SPEED)
- Power supplied by USB.
- Compatible with WinXP/7/8/10/11/Vista and Mac OSX or greater.
- Drive free and hot-plug supported.

(The specifications are subject to change without notice.)



pandamini II

Website : www.worlde.com.cn
Tel : +86-571-88732265



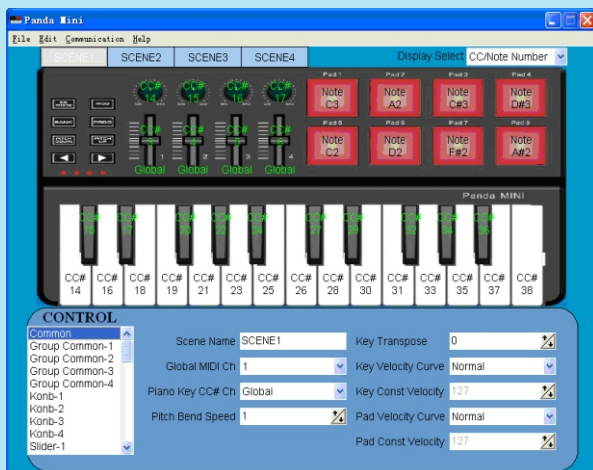
- 25 Velocity sensitive mini-keys, with 3 velocity curve and one constant velocity.
- 8 High quality velocity & pressure sensitive performance pads with RGB backlit , can be assigned easily as pads, MIDI note buttons.
- 4 Assignable rotary knobs, each can be edited by user.
- 4 Assignable control sliders.
- Brilliant OLED display for immediate parameter setting.
- 2 Touch sensors of dynamic pitch bend and modulation touch strips.
- Play and record transport control buttons.
- Standard sustain pedal jack,compatible with switch pedal.
- Connect to your hardware with a standard TRS MIDI Out 3.5mm jack .
- Powerful and creative Arpeggiator for generating ideas quickly.
- Fixed Chord mode.
- USB interface, adaptable to USB 2.0(FULL SPEED)
- Power supplied by USB.
- Compatible with WinXP/7/8/10/11/Vista and Mac OSX or greater.
- Drive free and hot-plug supported.

(The specifications are subject to change without notice.)



PANDA MINI

Website : www.worlde.com.cn
Tel : +86-571-88732265

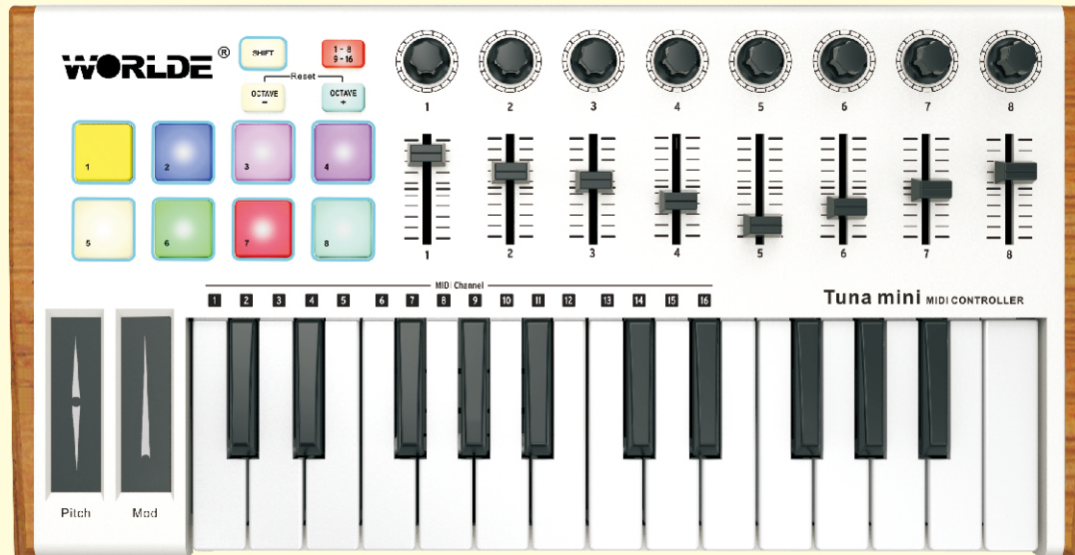


FEATURES

- 8X Trigger pads with velocity and assignable to controllers, with 3 velocity curve and one constant velocity
- 25X Keys with velocity assignable to controllers, with 3 velocity curve and one constant velocity
- 4X Assignable control knobs
- 4X Assignable control sliders
- 4X Banks for different settings
- Compatible with Win11/10/8/7/XP/ Vista and Mac OSX or greater

TUNAMINI MIDI CONTROLLER

WWW.WORLDE.COM.CN



FEATURES

- 25 keys with velocity assignable to controllers
- 3 velocity curve and one constant velocity
- Two banks of 8 high quality velocity & pressure sensitive performance pads with RGB backlit for 16 total, can be assigned easily as pads, MIDI CC buttons or program change switches
- 8 assignable control sliders
- 8 assignable control encoders
- 2 touch sensors of dynamic pitch bend and modulation touch strips
- standard sustain pedal jack
- USB interface, adaptable to USB2.0(FULL SPEED)
- Compatible with Win XP/7/8/10/11/Vista and Mac OSX or greater
- Drive free and hot-plug supported

WORLDDE MINI

Website : www.worlde.com.cn
Tel : +86-571-88732265

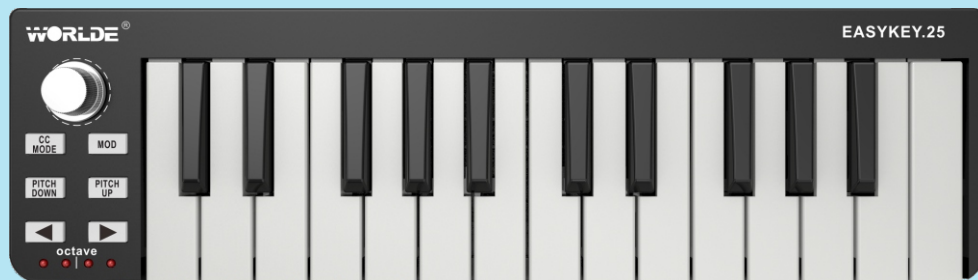


FEATURES

- 2Xbanks of 8 backlit performance pads assignable to controllers
- 25Xkeys with velocity assignable to controllers, with 3 velocity curve and one constant velocity
- 16Xassignable encoder
- Pitch and modulation touch strips
- USB interface, adaptable to USB2.0 (FULL SPEED)
- Power supplied by USB
- Compatible with Win11/10/8/7/XP/Vista and Mac OSX or greater.
- Drive free and hot-plug supported.

EASYKEY/CONTROL/PAD

Website : www.worlde.com.cn
Tel : +86-571-88732265



EASYKEY:

- 25 keys with velocity assignable to controllers
- 3 velocity curve and one constant velocity
- transpose functions

EASYCONTROL:

- 11 assignable buttons
- 9 assignable control sliders
- 9 assignable control knobs
- 4 banks for different settings
- 6 transport buttons assignable to controllers

EASYPAD:

- 12 trigger pads with velocity assignable to controllers
- 2 assignable buttons
- 4 banks for different settings
- 6 transport buttons assignable to controllers

EASYKEY/CONTROL/PAD:

- USB interface, adaptable to USB2.0(FULL SPEED)
- Compatible with Win11/10/8/7/XP/Vista and Max OSX or greater
- Drive free and hot-plug supported

P-49/61/88 PRO

Website : www.worlde.com.cn
Tel : +86-571-88732265



- Professional master MIDI keyboard with brushed aluminum panel.
- 49/61/88 semi-weighted keys with aftertouch.
- 16X high quality velocity & pressure sensitive performance pads with RGB backlit, can be assigned easily.
- 8X Assignable encoders, each encoder can be edited by user.
- 8X Assignable sliders, each encoder can be edited by user.
- 6X Buttons for MMC.
- 20X Function buttons, providing functions like PROGRAM CHANGE, CHANNEL, CONTROL ASSIGN, TRANSPOSE, OCTAVE, EDIT and etc.
- 2X Touch sensors of dynamic pitch bend and modulation touch strips.
- 1X MIDI In, 1X MIDI Out.
- 2X Assignable pedal interfaces (Pedal A, Pedal B), compatible with switch pedal and continuous pedal, which can be configured to 130 controllers.
- USB interface, adaptable to USB 2.0 (FULL SPEED).
- Power supplied by USB and DC 5V.
- Compatible with WinXP/7/8/10/11/Vista and Mac OSX or greater.
- Drive free and hot-plug supported.

(The specifications are subject to change without notice.)



Blue whale 25/37/49/61/88

Website : www.worlde.com.cn
Tel : +86-571-88732265

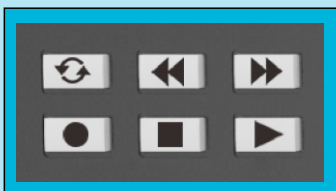
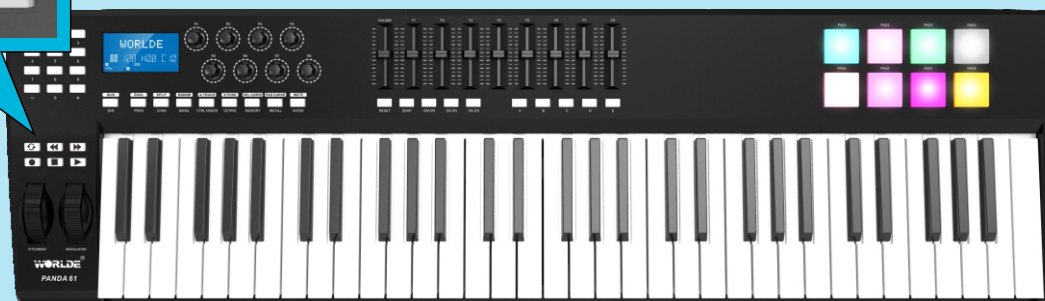


- Professional master MIDI keyboard with brushed aluminum panel.
- 25/37/49/61/88 semi-weighted keys with aftertouch.
- 8X high quality velocity & pressure sensitive performance pads with RGB backlit, can be assigned easily.
- 8X Assignable encoders, each encoder can be edited by user.
- 5X Buttons for MMC.
- Function buttons, providing functions like PROGRAM CHANGE, CHANNEL, CONTROL ASSIGN, TRANSPOSE, OCTAVE, EDIT and etc.
- 2X touch sensors of dynamic pitch bend and modulation touch strips.
- 1X MIDI out.
- 2X Assignable pedal interfaces (Pedal A, Pedal B), compatible with switch pedal and continuous pedal, which can be configured to 130 controllers.
- USB interface, adaptable to USB 2.0 (FULL SPEED)
- Power supplied by USB and DC 5V.
- Compatible with WinXP/7/8/10/11/Vista and Mac OSX or greater.
- Drive free and hot-plug supported.

(The specifications are subject to change without notice.)

PANDA25 / 49 / 61

Website : www.worlde.com.cn
Tel : +86-571-88732265



FEATURES

- 8X Trigger pads with velocity
- 2X Assignable pedal interface
- 8X Assignable dials
- 8X Assignable sliders
- Assignable pitch bend wheel and modulation wheel
- 6X Buttons for transport control
- 1XMidi out, 1XMidi in
- Compatible with Win11/10/8/7/XP /Vista and Mac OSX or greater
- Drive free and hot-plug supported

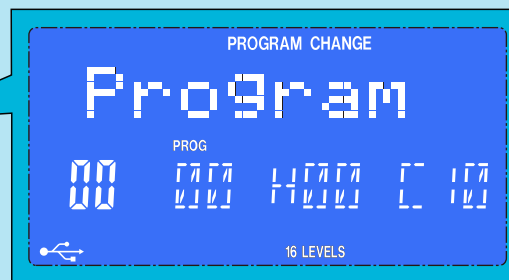
PANDA 200

Website : www.worlde.com.cn
Tel : +86-571-88732265



FEATURES

- 16X Trigger pads with velocity
- 5X Assignable dials
- 8X Assignable sliders, each slider can be edited by user
- 26X Assignable buttons
- Function buttons, providing functions like, EDIT, GLOBAL, LEVELS, PRESET, PROGRAM CHANGE and etc
- 1X MIDI out, 1 MIDI in
- Compatible with Win11/10/8/7/XP/Vista and Mac OSX or greater
- Power supplied by USB and DC 9V
- Drive free and hot-plug supported



KS25A/49A/61A USB/MIDI CONTROLLER KEYBOARD

Website : www.worlde.com.cn
Tel : +86-571-88732265



FEATURES

- Professional master MIDI keyboard with built-in USB.
- 25/49/61 keys with initial touch.
- 2x Assignable pedal interfaces (Pedal A, Pedal B), compatible with switch pedal and continuous pedal, which can be configured to 152 controllers.
- 1x Assignable slider, which can be configured to 148 controllers, preset is master volume.
- Pitch bend wheel and modulation wheel, which can be configured to 148 controllers.
- 2x Assignable data button (Data +/-), which can be configured to 160 controllers.
- 1x Edit button, switch multi-function keyboard status.
- 4x Assignable dials, which can accomplish two groups of functions (R1~R4 and R5~R8).
- 1x MIDI output.
- Power supplied by USB and DC 9V.
- Compatible with Win 11/10/8/7/XP/Vista and Mac OSX or greater.
- Drive free and hot-plug supported.

KS25B/49B/61B

USB/MIDI CONTROLLER KEYBOARD

Website : www.worlde.com.cn

Tel : +86-571-88732265



FEATURES

- Professional master MIDI keyboard with built-in USB.
- 25/49/61 keys with initial touch.
- 2x Assignable pedal interfaces (Pedal A, Pedal B), compatible with switch pedal and continuous pedal, which can be configured to 152 controllers.
- 1x Assignable slider, which can be configured to 148 controllers, preset is master volume.
- Pitch bend wheel and modulation wheel, which can be configured to 148 controllers.
- 2x Assignable data button (Data +/-), which can be configured to 160 controllers.
- 1x Edit button, switch multi-function keyboard status.
- 4x Assignable dials, which can accomplish two groups of functions (R1~R4 and R5~R8).
- 1x MIDI output.
- Power supplied by USB and DC 9V.
- Compatible with WinXP/Vista/Win7/8/10/11 and Mac OSX or greater.
- Drive free and hot-plug supported.

KS49C



FEATURES

- With dream sound source(KS49C-S)
- 1XPhones jack(KS49C-S)
- 49 note keyboard with velocity(can be edited by WORLD E KS49C control editor)
- 1XAssignable pedal interface(can be edited by WORLD E KS49C control editor)
- 1XMaster volume slider(can be edited by WORLD E KS49C control editor)
- 1XMIDI out
- USB interface, adaptable to USB2.0 (FULL SPEED)
- Power supplied by USB
- Feasible for future upgrading via USB
- Compatible with Win XP/7/8/10/11/Vista and Mac OSX or greater.
- Drive free and hot-plug supported

WHALE 49

Website : www.worlde.com.cn
Tel : +86-571-88732265

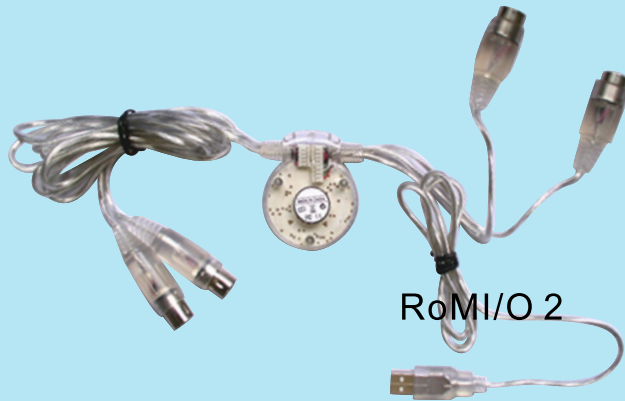


FEATURES

- 16X Trigger pads with velocity.
- 6X Buttons for MMC.
- 16X Assignable knobs, each knob can be edited by user.
- 9X Assignable sliders, each slider can be edited by user.
- 10X Function buttons, providing functions like PROGRAM, CHANNEL, BANK, MUTE, SNAP, CURVE, TRANSPOSE, DUAL, AFTERTOUCH, CONTROL ASSIGN, RESET and etc.
- 2X Buttons for octave +/-.
- 1X MIDI out, 1X MIDI In.
- 3X Assignable pedal interfaces.
- USB interface, adaptable to USB 2.0(FULL SPEED).
- Power supplied by USB and DC 9V.
- Compatible with Win11/10/8/7/XP/Vista and Mac OSX or greater.
- Drive free and hot-plug supported.

16 Channel MIDI-USB and USB-MIDI Interface

plug and play Installation



RoMI/O 2

MIDI PORT



Mac OSX 10.0x
Windows XP
Windows2000
Windows ME
Windows7/8/10/11

RoMI/O 2 is a compact USB 2.0 MIDI interface that is compatible with WinXP Win Vista, Win Me, Win7/8/10/11 and Mac OSX without the hassle of complicated driver installation. Just plug it in and it works. RoMI/O 2 provides 2 input ports and 2 output ports to connect all MIDI compatible devices such as a keyboard or synthesizer to your computer.

Connect MIDI PORT'S USB connector into your computer, your computer will detect it as new HARDWARE and you will see a LED light inside the MIDI PORT. The computer will automatically install the correct USB driver. For further installation instructions please refer to the website.